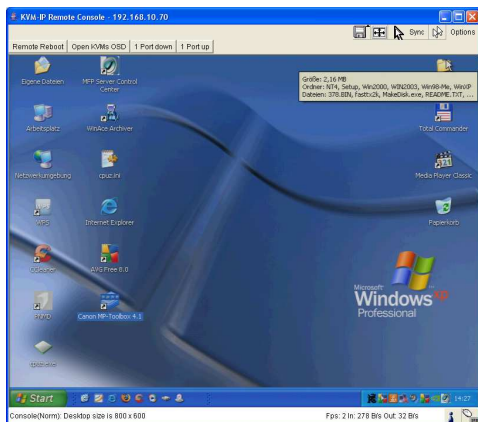


Remote Console

Starting the Remote Console opens an additional window which displays the screen content of the host system. The Remote Console will behave in exactly the same way as if you were sitting directly in front of the screen of the host system. You will find two cursors displayed on the screen, the local mouse cursor and the remote mouse cursor. Please be aware that the host system will react to keyboard and mouse actions with a slight delay. When moving the local cursor on screen you will notice the remote cursor will have a slight motion delay. This delay will vary depending on your connection speed and available bandwidth.



The upper part of the Remote Console window contains a control bar. The remote command buttons on the left side can be configured except for the Remote Reboot (CTRL-ALT-DELETE). When viewing the icons on the right side you will see the current state of the Remote Console and be able to adjust the local Remote Console settings. There are several options to choose from, below is an introduction to the most important ones. Please refer to the User Manual for further options and information.

Auto Adjust button

If the video display is poor quality or distorted in some way, click this button and wait a few seconds while the KVM over IP module adjusts itself for the best possible video quality.

Sync mouse

Choose this option in order to synchronize the local AND remote mouse cursors. If the mouse does not synchronize, select Intelligent **Sync** from the **Mouse Handling** sub menu of the Remote Console **Option** menu.

Video Settings (from within the Options Menu)

This opens a new window from which you can adjust brightness, contrast etc. of the displayed picture in the Remote Console window.

Quick Installation is now complete. Refer to the full User Manual on the supplied CD for more information about the advanced features of the KVM over IP Access Module!

KVM over IP Access Module Quick Start Guide

This Quick Start Guide provides a brief introduction to the KVM over IP remote access module for the LINDY CAT-32 Series KVM switches and shows you how to quickly set up the device for use. For more detailed operation instructions please consult the full User Manual on the supplied CD.

Package Contents

- KVM over IP Access Module
- RS232 Serial cable
- USB A to Mini-B Cable
- Software & User Manual CD
- This Quick Start Guide

Introduction:

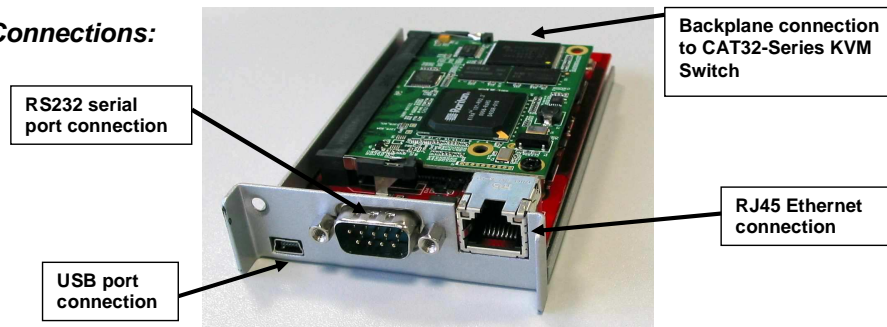
The IP access module provides remote KVM over IP access to the CAT-32 KVM Switch. It converts all keyboard video and mouse signals and sends them as TCP/IP signals over your LAN/WAN connection. The KVM Switch CAT-32 may be accessed from any computer connected to your network and externally via the internet. The IP access module provides full KVM access including BIOS level access to all the connected computers. The KVM over IP Access module can be accessed via a web browser and via dedicated software tools included with the product. A high level of security is offered which uses secure encrypted sessions and password authentication.

Please note that KVM over IP does not operate in a “real time” environment and that some degree of time delay will occur due to limiting factors such as available bandwidth and network traffic.

Installation:

Before you install the KVM over IP module into the KVM switch ensure all connected computers are switched off and the power supply is unplugged. Proceed to unscrew and remove the small metal cover on the rear of the KVM switch. Carefully slide the module into the slot and secure in place with the screw previously removed. The spare product label with MAC address and serial number may be affixed to the KVM Switch for future reference. You may now proceed to power up all connected equipment and connect the IP module and check for correct operation.

Connections:



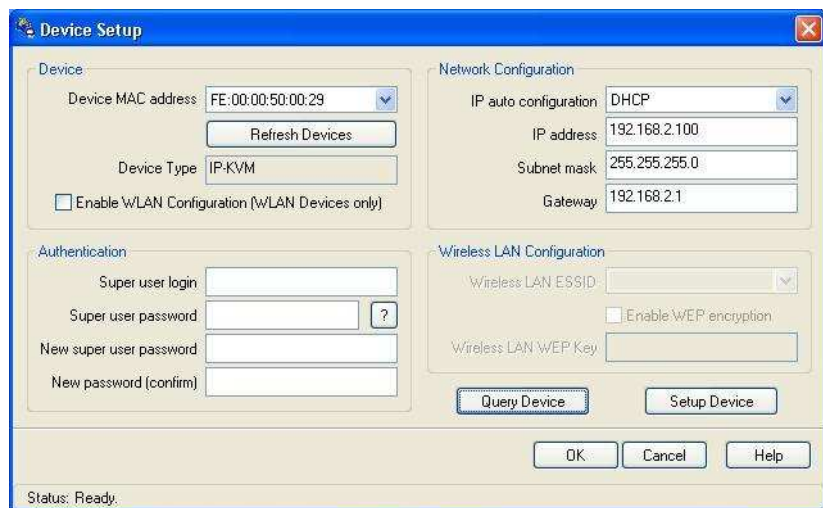
1. **(Optional)** If you want to use the remote mass storage control feature, use the supplied USB A to Mini-B cable to connect the USB port on the KVM over IP Module to a USB port on the host system.
2. **(Optional)** Connect a modem, RS232 terminal or RS232 port to the serial port connector on the rear of the module.
3. Connect an Ethernet cable to the RJ-45 Ethernet port.

Configuration

By default, the KVM over IP module will try to contact a DHCP server in the subnet to which it is physically connected. If a DHCP server is found, it will provide a valid IP address, gateway address and net mask. Before you connect the device to your local subnet, be sure to complete the corresponding configuration of your DHCP server. It is recommended to configure a fixed IP assignment to the MAC address of the KVM over IP module. You can find the MAC address details on the printed label supplied and on the underside of the IP Access module.

KVM over IP module Setup Tool

Start the setup tool from the CD ROM -



On the upper left corner, the MAC address of the KVM over IP module is displayed. To detect the MAC address, press the **Refresh Devices** button. The displayed MAC address should correspond to the printed address shown on the label on the base of the IP module.

On the lower right corner of the window, there are two buttons: **Query Device** and **Setup Device**. Press the **Query Device** button to display the preconfigured values of the network configuration. The values are displayed in the text fields located above. If necessary, adjust the network settings to your needs. To save the changes enter a user login and a password (the default user name is **super**, the default password is **pass**) and then press the **Setup Device** button.

Logging In

The KVM over IP module can be entirely managed using a standard web browser. You can access the KVM over IP module using the insecure HTTP protocol, or using the encrypted HTTPS protocol. Whenever possible, activate and use HTTPS.

In order to use the Remote Console window of your managed host system, your browser must support the Java Runtime environment.

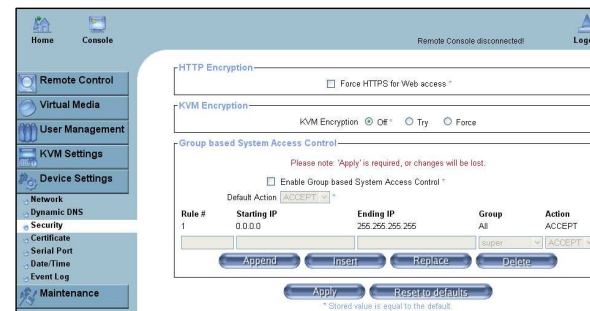
Launch your web browser and enter the IP address of the KVM over IP module.

Example: Type the following in the address line of your browser when establishing an unsecured connection: **http://<IP address of KVM over IP module>**

This will open the KVM over IP module login page as shown. The KVM over IP module has a built-in super user account that has all the permissions enabled to administrate your KVM over IP module switch:



Login name	super (factory default)
Password	pass (factory default)



Once you have logged into the KVM over IP module successfully, you will be asked to enter a new password. Please change the default password to prevent unauthorized access. When completed the main administration and configuration page will appear.

To further increase security over the simple Login/Password procedure you may wish to activate secure https access and also KVM encryption. To do so select the menu "Device Settings / Security" and select the option "Force HTTPS" and/or "KVM encryption".

Once https and KVM encryption have been enabled then only https access to the IP-KVM will be possible and you will have to accept the https certificates in all browsers accessing the IP-KVM. Further details and configuration settings can be found in the detailed English manual of your KVM Switch CAT-32 IP on the supplied CD.

To view the remote computer connected to the IP KVM Switch on your local computer screen please click on the **Console** icon.

